



Polypipe
Broomhouse Lane
Edlington
Doncaster
DN12 1ES
UK

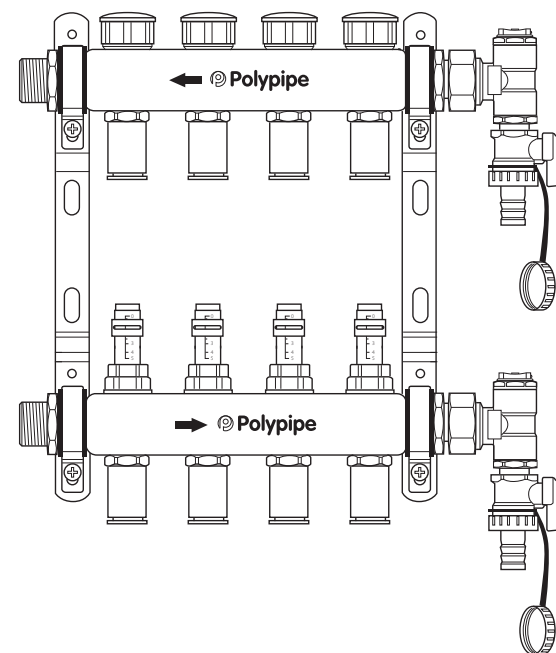
Tel: +44 (0) 1709 770000
Fax: +44 (0) 1709 770001

www.polypipe.com



Installation and Maintenance Instructions

Underfloor Heating Manifolds



Polypipe range of stainless steel manifolds
designed for underfloor heating applications

First isolate all but one of the heating circuits by turning off the relevant decorator's caps.

Next flush out the open circuit with clean water until it runs freely from the top valve.

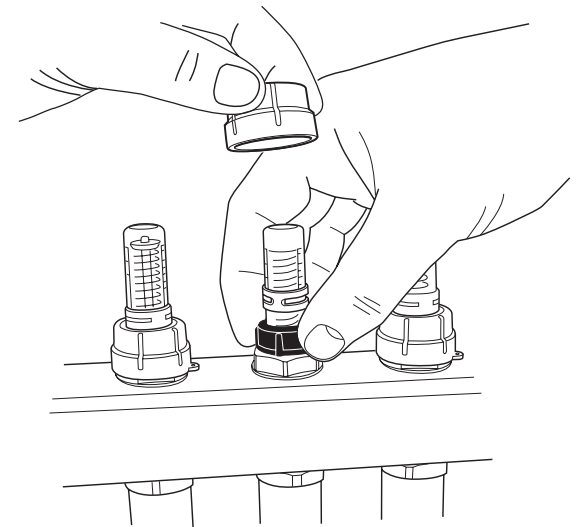
Isolate this circuit and open the next one.

Repeat this until all circuits have been filled. Introduce any inhibitor or antifreeze at this stage.

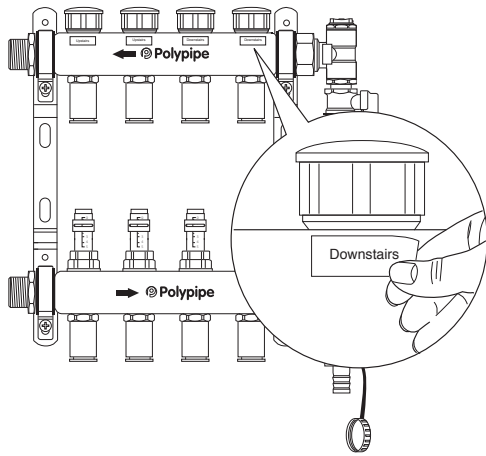
Flow rates should be set to correspond with the system design. This is achieved (with the pump running) by lifting the locking collars at the base of the flow indicators and twisting the indicator base until the desired flow is indicated, then refit the locking collars.

Please do not twist the glass as this will completely remove the gauge, this is designed only to be removed for cleaning purposes, and when the flow has been isolated.

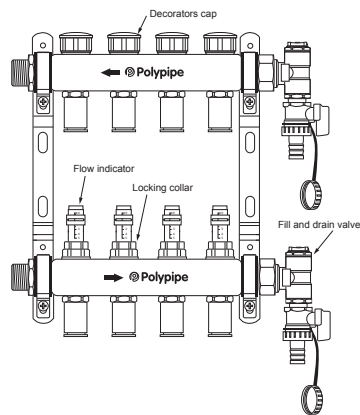
Each flow meter comes with an indicator sleeve, these can be positioned to correspond with the flow rate which has been set for each one.



After the installation is complete the identity stickers can be used (if desired), to identify which zone each loop of pipe serves.



Section 6 - Commissioning



When initially filling the UFH heating system it is important to remove the air in the pipework.

In order to do this a hose should be connected to the lower fill/drain valve and the top valve should be opened to allow the water to be flushed into a bucket or drain.

Contents

- 1 General information
- 2 Materials & specification
- 3 Dimensional information
- 4 Pack contents
- 5 Installation guidance
- 6 Commissioning

Section 1 - General Information

The Polypipe underfloor heating manifold includes flow and return manifolds that come pre-assembled to installation brackets and supplied with male-to-male adaptors, filling/drain points which include a manual air vent, wall mounting plugs, screws, and identity labels for each zone.

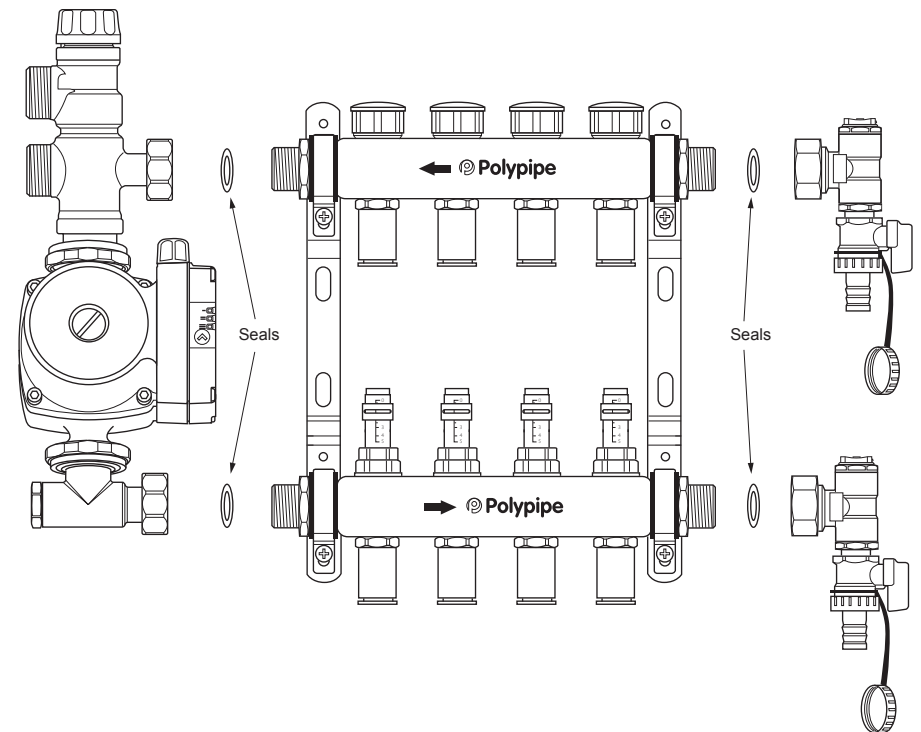
Section 2 - Materials & Specifications

Maximum working pressure:	6 bar
Maximum working temperature:	70°C
Media:	Water with corrosion inhibitors present

Manifold body:	304 stainless steel
Drain valve/ Air vent:	Nickel plated brass
Internal seals:	NBR and EPDM
Bracket:	Zinc plated mild steel
Pushfit fitting body:	Standard brass

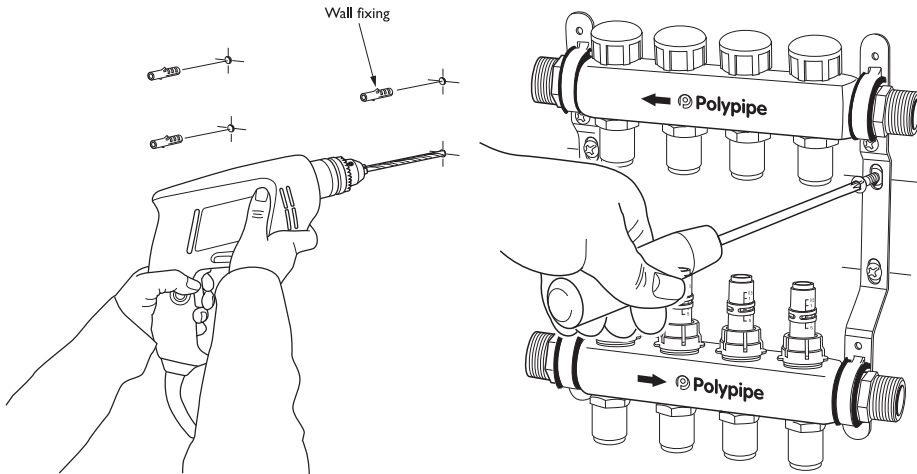
The manifold is now ready to have the underfloor pipes and the UFH temperature control unit attached, ensure the fibre washers are inserted to form a seal.

Ensure the underfloor heating pipe is cut squarely and is not damaged.

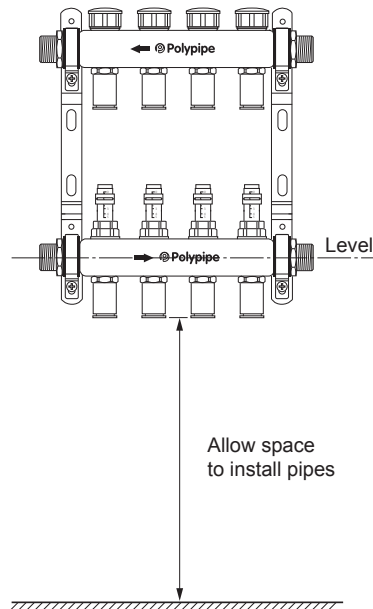


Section 5 - Installation Guidance

Use the screws and plugs provided to mount the pre-assembled flow and return manifold assembly to the wall (please ensure that the screws and plugs provided are appropriate for your wall construction, if not alternative suitable fixings should be used)



Make sure that the manifold is level and that it is high enough so that the pipes can be installed easily.



Flow Meters

Flow rate range: 0-5 LPM

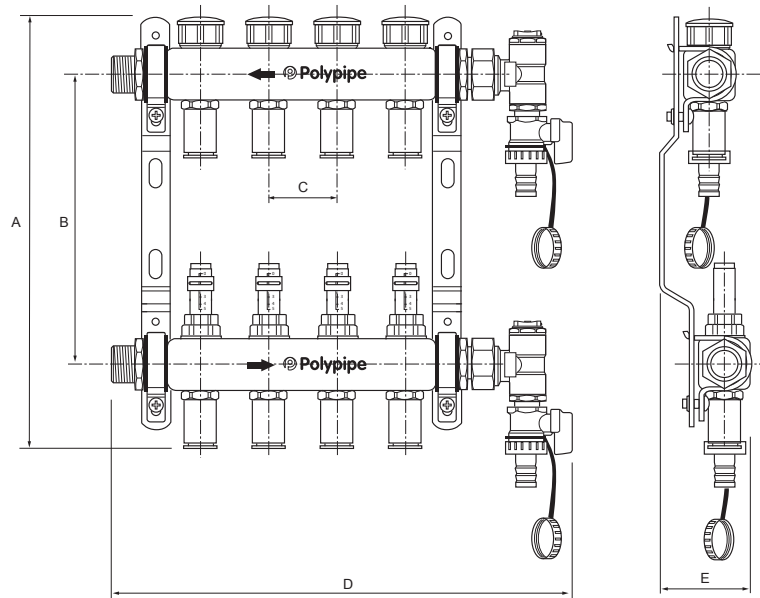
Connection fitting: Brass
 O Ring seals: NBR
 Spring: Stainless steel
 Cover cap: ABS
 Regulator window: Polymer

Circuit Control Valve

Stroke: 3mm

Connection fitting: Nickel plated brass
 O Ring seals: EPDM
 Washer: EPDM
 Spindle: Stainless steel
 Spring: Stainless steel
 Cover cap: ABS

Section 3 - Dimensional Information



No of Circuit's	A	B	C	D	E
2	310	210	50	230	73.5
3	310	210	50	280	73.5
4	310	210	50	330	73.5
5	310	210	50	380	73.5
6	310	210	50	430	73.5
7	310	210	50	480	73.5
8	310	210	50	530	73.5
9	310	210	50	580	73.5
10	310	210	50	630	73.5
11	310	210	50	680	73.5
12	310	210	50	730	73.5

All dimensions are shown in mm unless otherwise stated

Section 4 - Pack Contents

Before commencing the installation please check that all of the manifold pack components are in the box.

The kit should include :

- One flow and one return manifold with Polypipe pushfit fittings pre-installed on wall mounting brackets
- One sheet of identity stickers
- Wall plugs & screws
- Fill/Drain valves
- Instruction booklet