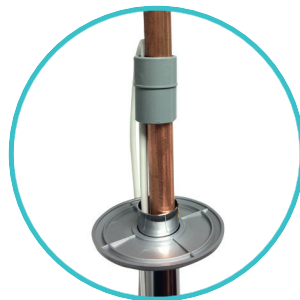


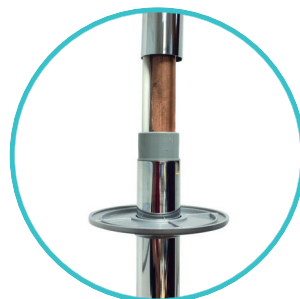
9

Thread the grey plastic extension tube sleeve over the data cable and place into position in the top of the exposed rail assembly.



10

Thread the extension rail over the data cable and supply pipe and push into position onto the rail assembly.



11

Where relevant, the upper rail fixing bracket may be positioned to cover the extension joint.



12

Secure the Q Exposed controller and rail assembly to the wall following the installation instruction supplied with the shower system.

AQUALISA

Aqualisa Products Limited
The Flyers Way
Westerham Kent TN16 1DE
Customer Services: 01959 560010
Warranty registration: 0800 408 4243
Brochure hotline: 0800 652 3669
Website: www.aqualisa.co.uk
Live Chat at aqualisa.co.uk
Email: enquiries@aqualisa.co.uk

Republic of Ireland
Sales enquiries: 01-864-3363
Service enquiries: 01-844-3212

Follow us on:



Please note that calls may be recorded for training and quality purposes.

The company reserves the right to alter, change or modify the product specifications without prior warning.

© Registered Trademark Aqualisa Products Limited.



Did you know we offer free installer training?

- Locations across the UK
- Expert installation advice
- Deals on the day

Book your place!

aqualisa.co.uk/training
01959 560042

AQUALISA Q™

EXTENSION RAIL INSTALLATION INSTRUCTIONS



COMPONENTS LIST

Product code 910596:

550mm chrome Extension Rail
O- Ring
Grey Plastic Extension sleeve
15mm Gripper ring
Plastic Spacer Ring

Product Code 910572:

Plastic Spacer Ring
15mm Gripper Ring
O- Ring

Product Code 910577:

Outlet Screw Cap
Plastic Spacer Ring
15mm Gripper Ring
O- Ring
Q Exposed Chrome Sleeve
Hose Spacer

KEY:

FITTING THE EXPOSED RAIL EXTENSION 550MM.

Follow points 1 – 10 (Excluding point 3)

REPLACING THE EXPOSED RAIL GRIPPER KIT OR
THE EXPOSED RAIL EXTENSION KIT 100MM.

Follow points 1 – 3 and 5 -8

RAIL SYSTEM

1

Loosen the large white plastic locking nut located within the bottom bracket assembly.

2

The bottom chrome tube is now released and can be removed and set aside.

3

This instruction point is only required for fitting parts 910572 and 910577.
Remove the o-ring, spacer and gripper ring from the end of the copper supply pipe.



The gripper ring can be removed by using a pair of side cutters, being careful not to damage the supply pipe.

4

Remove the entire copper supply pipe from the chrome rail assembly and insert a longer length of supply pipe.



Ensure that the pipework has been deburred.

5

The new gripper ring, spacer and o-ring need to be fitted in the order and orientation as per image.



6

Apply the new gripper ring, spacer and o-ring to the bottom of the new supply pipe.



The gripper ring must be fitted no more than 15mm from the end of the supply pipe.

7

Firmly push the supply pipe into the bottom chrome tube assembly, ensuring that it is fully home.



8

Offer the supply pipe and bottom chrome tube assembly into the bracket and secure the large plastic locking nut – hand tight.